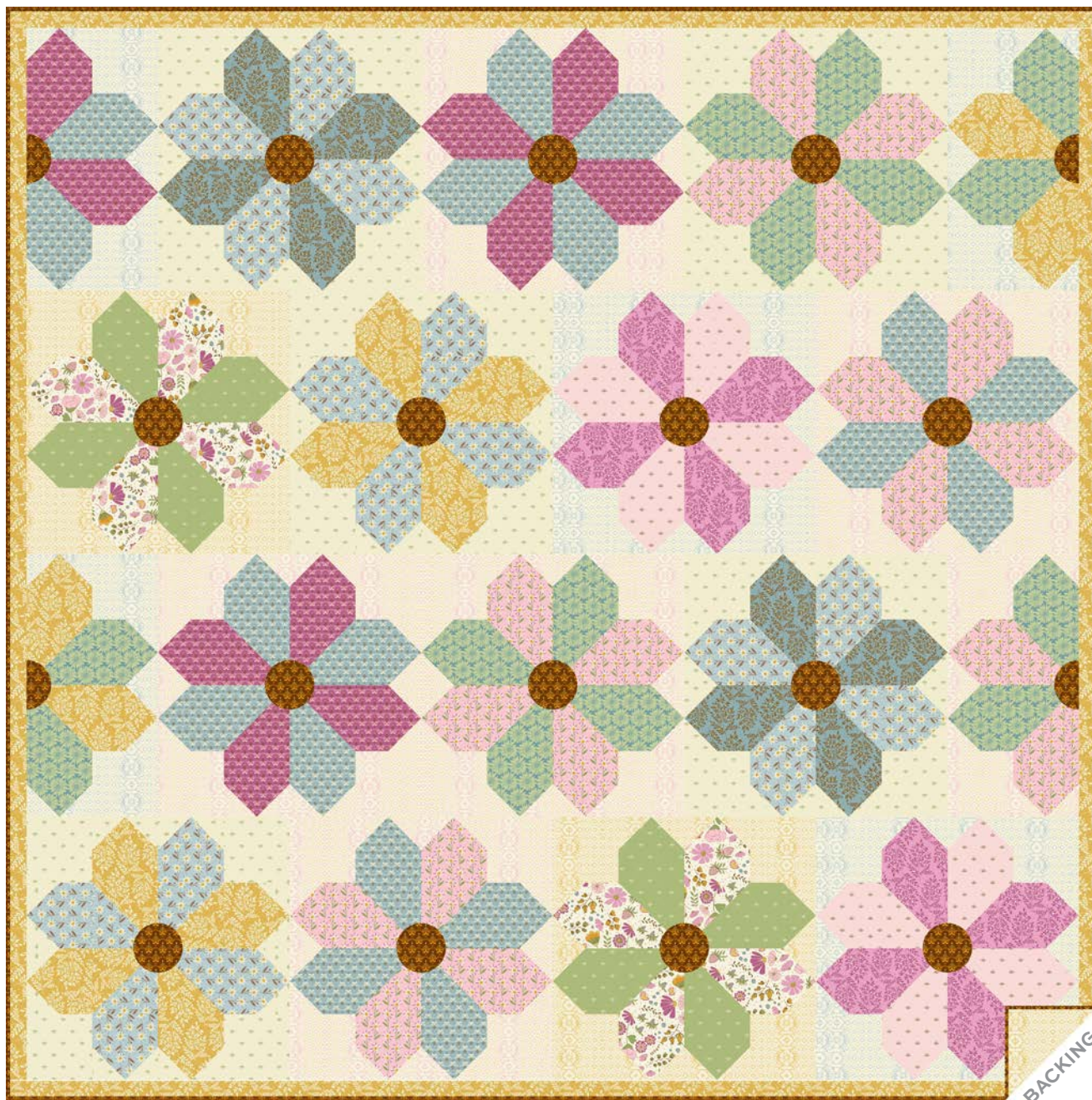


Flourish

ALEXANDRA BORDALLO



Floral Patch Quilt designed by: **Alexandra Bordallo**

Quilt Size: **66" x 66"** • Skill Level: **Confident Beginner**

Floral Patch Quilt

Introducing Andover Fabrics new collection: **FLOURISH** by Alexandra Bordallo

Quilt designed by Alexandra Bordallo

Quilt finishes 66" x 66"

14 Full Blocks: 16" x 16"

4 Half-Blocks: 8" x 16"

Reminiscent of the Depression-Era appliqué block called Aster, this original block is made with pieced units easy enough for someone with a little sewing experience. Half-blocks are used to stagger the flower blocks. Pretty floral prints add to the charm.

Cutting Directions

Note: Read assembly directions before cutting patches. All measurements are cut sizes and include ¼" seam allowances. A fat ¼ is an 18" x 20" -22" cut. Borders are cut the exact lengths required plus ¼" seam allowances. WOF designates the width of fabric from selvedge to selvedge (approximately 42" wide).

Cutting for ONE Full Block

Light Print (Background):

Cut (4) squares 4½"

Cut (16) squares 2½"

Bright #1 (Flower)

Cut (4) squares 4½"

Cut (2) squares 5" (or 4⅞") for HST
(Read Step 3 before cutting)

Bright #2 (Flower)

Cut (4) squares 4½"

Cut (2) squares 5" (or 4⅞") for HST

Fabric 18

Cut (1) Template 1

Cutting for ONE Half Block

Light Print (Background)

Cut (2) squares 4½"

Cut (8) squares 2½"

Bright #1 (Flower)

Cut (2) squares 4½"

Cut (1) square 5" (or 4⅞") for HST

Bright #2 (Flower)

Cut (2) squares 4½"

Cut (1) square 5" (or 4⅞") for HST

Fabric 18

Cut (1) Template 2

Cutting for ENTIRE Quilt

Fabrics 2, 19, 20, 22, 23 From each:

Cut (8) squares 4½"

Cut (4) squares 5" (or 4⅞") for HST

Fabric 4

Cut (14) squares 4½"

Cut (7) squares 5" (or 4⅞") for HST

Fabric 7

Cut (16) squares 4½"

Cut (8) squares 5" (or 4⅞") for HST

Fabrics 8 & 16

Cut (18) squares 4½"

Cut (9) squares 5" (or 4⅞") for HST

Fabric 10

Cut (14) squares 4½"

Cut (56) squares 2½"

Fabric 11

Cut (22) squares 4½"

Cut (88) squares 2½"

Fabric 12

Cut (8) squares 4½"

Cut (32) squares 2½"

Making the Quilt

When making the blocks, refer to these labels and the list of fabrics on the last page of the pattern.

| | | | |
|------------------|------------------|------------------|------------------|
| 2 1622-L | 4 1623-B | 7 1624-B | 8 1624-E |
| 10 1625-B | 11 1625-E | 12 1625-Y | 16 1627-B |
| 17 1627-E | 18 1627-N | 19 1628-B | 20 1628-E |
| 21 1628-Y | 22 1629-E | 23 1629-G | 24 1629-L |

Fabric Requirements

| | | Yardage |
|------------------------------|-----------|-------------|
| 2 Lights | blocks | 1 yard each |
| Fabrics 11, 24 | | |
| 3 Prints | blocks | ⅝ yard each |
| Fabrics 8, 10, 16 | | |
| 2 Florals | blocks | ½ yard each |
| Fabrics 4, 7 | | |
| 2 Prints | blocks | ⅔ yard each |
| Fabrics 12, 17 | | |
| 6 Fat ¼ | blocks | fat ¼ each |
| Fabrics 2, 19, 20, 22, 23 | | |
| Fabric 21 | border | ¾ yard |
| Fabric 18 (+ binding) | templates | ⅞ yard |
| Fabric 12 (backing) | 4½ yards | |

Fabric 17

Cut (10) squares 4½"

Cut (5) squares 5" (or 4⅞") for HST

Fabric 18

Cut (14) Template 1

Cut (4) Template 2

Fabric 21

Cut (7) strips 1½" x WOF, pieced to make the following:

2 top/bottom borders 1½" x 66½"

2 side borders 1½" x 64½"

Cut (12) squares 4½"

Cut (6) squares 5" (or 4⅞") for HST

Fabric 24

Cut (20) squares 4½"

Cut (80) squares 2½"

Fabric 18 (Binding)

Cut (8) strips 2½" x WOF for binding

Fabric 12 (Backing)

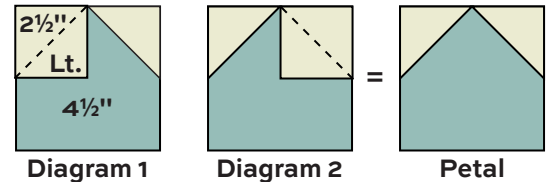
Cut (2) lengths 38" x 76", pieced to fit quilt top with overlap on all sides

Floral Patch Quilt

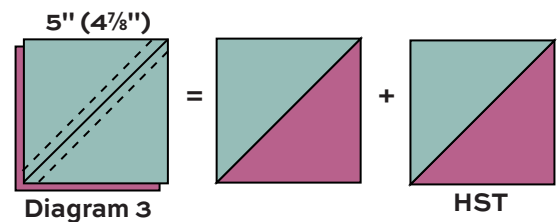
Making the Quilt

1. Each block is made with 3 fabrics: 1 light background print and 2 prints for the flowers. Refer to the Quilt Assembly for the fabric combinations, or feel free to make your own combinations.

2. The blocks use quick stitch-and-flip techniques. To make the petal units, draw a diagonal line on the $2\frac{1}{2}$ " background squares. Position a marked square on one corner of the first flower print $4\frac{1}{2}$ " square (Diagram 1). Stitch on the marked diagonal line. Cut away the excess fabric. Press the corner up. Repeat this step on the adjacent corner of the square (Diagram 2). Make 4 petal units alike for each full block. Likewise, repeat this step to make 4 more petal units using the second flower print. Set aside.

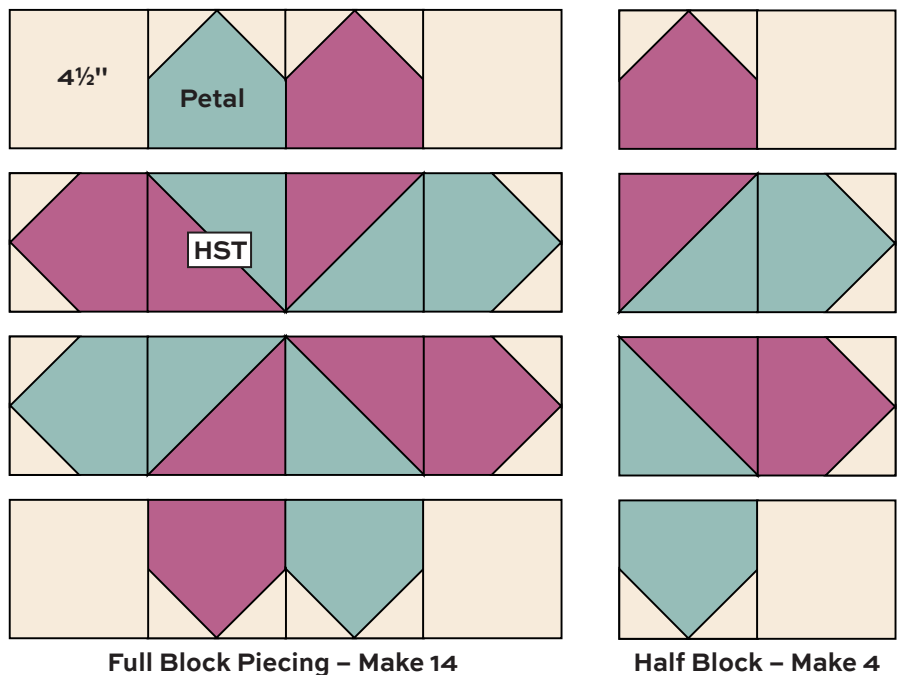


3. The blocks use half-square triangles (HST). Use your favorite method to make HST that finish 4", or follow these directions. Fabric squares cut 5" will be trimmed after stitching. Cut the squares $4\frac{7}{8}$ " if you do not wish to trim later. Draw a diagonal line on the wrong side of the lighter flower print squares. With right sides together, position the marked square on top of the second flower print square. Stitch $\frac{1}{4}$ " on each side of the diagonal line (Diagram 3). Cut apart on the drawn line. Press the seam allowance toward the darker fabric. Trim the square to $4\frac{1}{2}$ " if needed. Make 4 HST alike for each block.



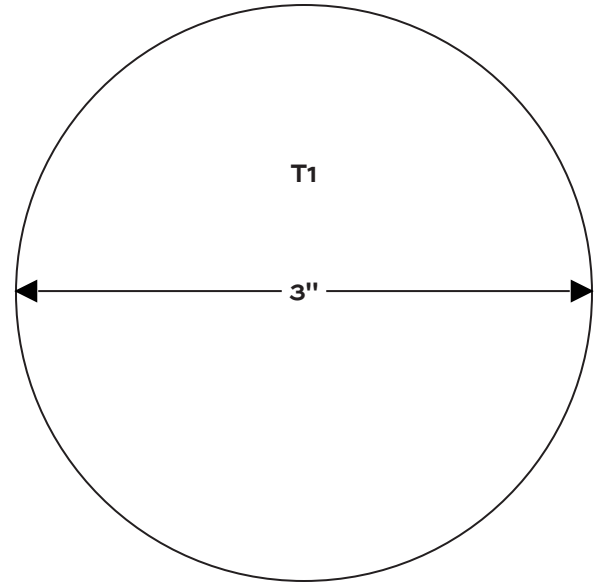
4. Refer to the Full Block Piecing diagram. Arrange the petal units, HST, and background $4\frac{1}{2}$ " squares in 4 rows as shown. Stand back to be certain the units are rotated correctly to form the flower design. Join the units into rows, and then join the rows. Make 14 Full Blocks.

5. Repeat the steps to make 4 Petal Units and 2 HST for each Half Block. Join the units as shown to make 4 Half Blocks.



Floral Patch Quilt

6. The center Fabric 18 Template 1 and 2 circles are appliquéd to each block and half block. These directions are for fusible appliqué. If you wish to stitch the raw edge of the appliqué, use a lightweight fusible webbing. If you do not plan to stitch it, use a heavy-weight fusible. On the paper side of the fusible webbing, trace Template 1. Cut around the shape loosely. Follow manufacturer's directions to fuse the webbing to the back side of Fabric 18. Cut out along the lines. Remove the paper backing and press the fabric motif to the center of the full block. Stitch along the edge of the motif with a decorative stitch or invisible thread. Add the center to each of the Full Blocks. Repeat these steps to add the Template 2 fabric patch to each Half Block, aligning the straight edges so that the edge of Template 2 will get caught in the seam when the border is added.

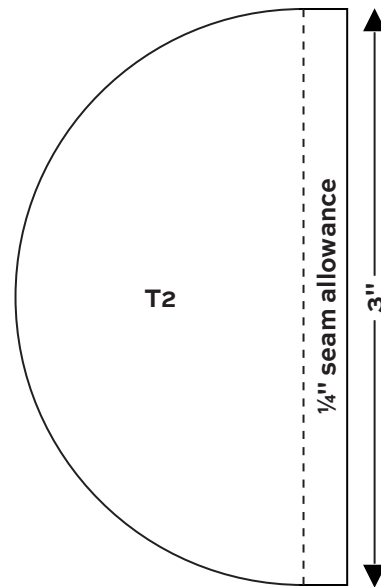


7. Refer to the Quilt Assembly. Arrange the blocks as shown into 4 rows. Once you are satisfied with the arrangement, join the blocks into rows, and then join the rows.

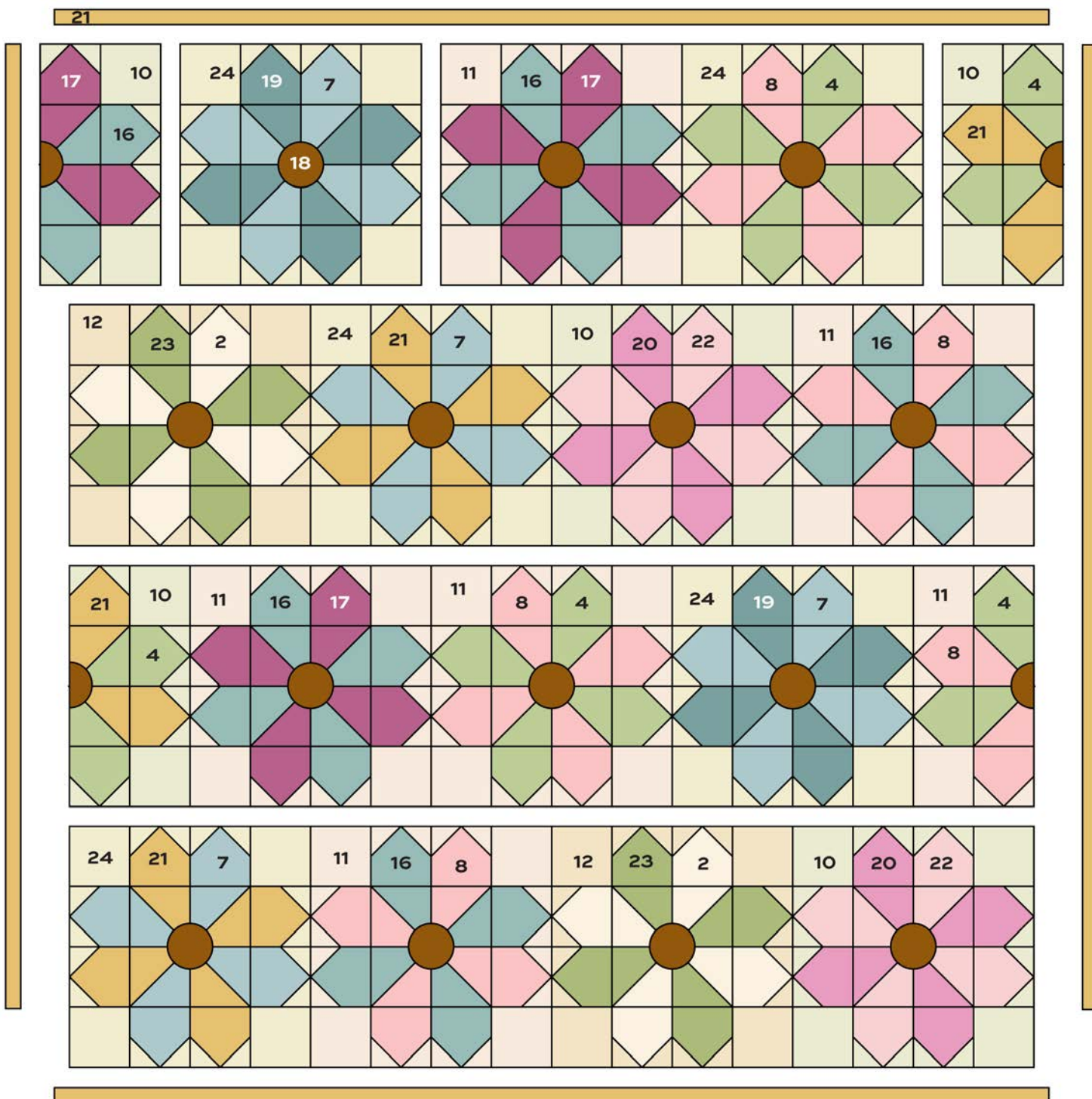
8. Sew shorter borders to the sides. Sew longer borders to the top and bottom.

Finishing the Quilt

9. Layer the quilt with batting and backing and baste. Quilt in the ditch around borders and patches. Or, quilt an overall design. Bind to finish the quilt.



Floral Patch Quilt



Quilt Assembly

Flourish

ALEXANDRA BORDELLO



1622-B*



1622-L



1622-N*



1623-B



1623-E*



1623-Y*



1624-B



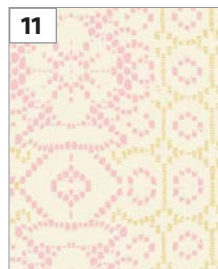
1624-E



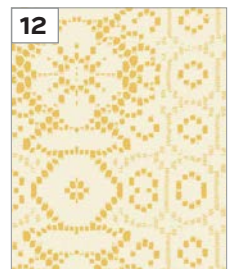
1624-L*



1625-B



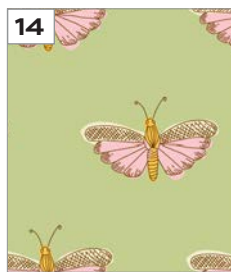
1625-E



1625-Y



1626-B*



1626-G*



1626-L*



1627-B



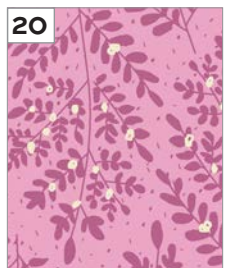
1627-E



1627-N



1628-B



1628-E



1628-Y



1629-E



1629-G



1629-L

*Indicates fabrics not used in quilt pattern.

Fabrics shown are 50% of actual size.

Free Pattern Download Available

1384 Broadway, 24th Floor, New York, NY 10018

Tel. (800) 223-5678 • andoverfabrics.com